



Front Elevation



Rear Elevation



Kitchen View



Living Room View



Bathroom View

Call sales for more information 512 837 8500

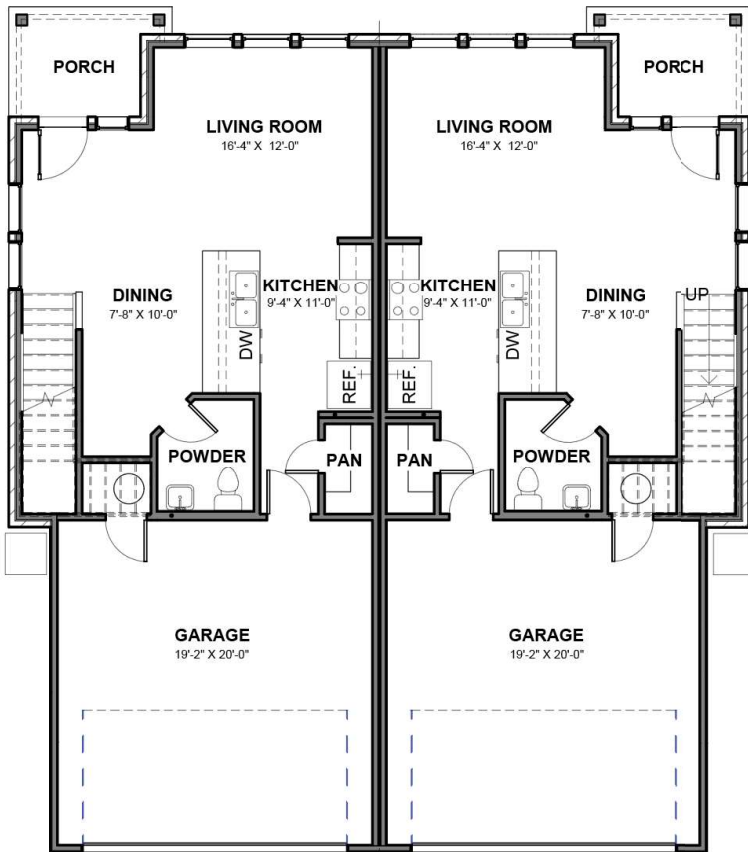
Effective Date: 08/27/20

Prices, floorplans and features are subject to change anytime with notice. All square footage are approximate and may vary upon elevations and/or options selected, and may change without notice. Any material colors depicted including windows, doors and shutters are subject to change and may not represent actual color installed on home. Any landscaping is an artist's rendering and actual landscaping will differ. Home prices will differ based on lot premium and elevation material and are subject to change without notice. Exterior stone is a natural material and is subject to variation. Please consult your Masonwood New Home Professional for current information. ©2020 | Masonwood Homes, LLC.

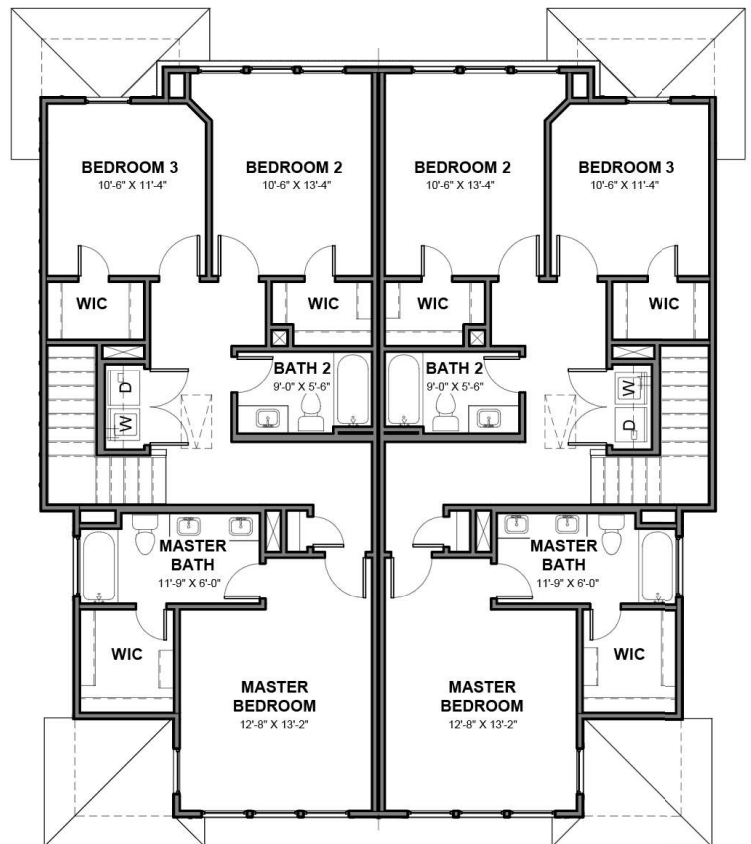




3,086 SQ FT TOTAL | 1,543 SQ FT PER SIDE



First Floor



Second Floor

Call sales for more information 512 837 8500

Effective Date: 08/27/20

Prices, floorplans and features are subject to change anytime with notice. All square footage are approximate and may vary upon elevations and/or options selected, and may change without notice. Any material colors depicted including windows, doors and shutters are subject to change and may not represent actual color installed on home. Any landscaping is an artist's rendering and actual landscaping will differ. Home prices will differ based on lot premium and elevation material and are subject to change without notice. Exterior stone is a natural material and is subject to variation. Please consult your Masonwood New Home Professional for current information. ©2020 | Masonwood Homes, LLC.

